

Liniar rigid, sever, expresie care aproape depășește realitatea... Element tratat și modulat a cărui austeritate devine proporție. Consolele se pun în evidență pentru a susține obiectul, apoi se contopesc cu mobilierul și apa. Variatele culori permit utilizarea în diverse instalații: în spațiile de zi, noapte sau baie. Decorează interiorul și emană căldură creând un confort fără egal.



Quadraqua, înălțimea 1828 mm, lățime 300 mm, Alb Perla

Caracteristici Tehnice

placă radiantă
filetarea de 1/2" G dreapta
presiunea maximă admisă 4 bar
temperatura maximă admisă 95°C

Standard equipment

robinet tur-retur satinat unghi reversibil dotată cu racorduri cupru (Ø 12, 14 mm) multistrat (14 grosime 2 și 16 grosime 2)
kit elemente de acoperire a țevilor (pentru țevi cu grosimea de până la 16 mm)
sistem de fixare pe perete
aerisitor

Certifications



Plus



Date tehnice

Model	Depth (mm)	Height (mm)	Width (mm)	Conn. C. (mm)	Weight (kg)	Capacity (lt)	$\Delta t=60^{\circ}\text{C}$ (Watt)	$\Delta t=50^{\circ}\text{C}$ (Watt)	$\Delta t=40^{\circ}\text{C}$ (Watt)	$\Delta t=30^{\circ}\text{C}$ (Watt)	$\Delta t=20^{\circ}\text{C}$ (Watt)	Exponent
Quadraqua S	300,0	1116	300	224	29,00	2,30	521,0	417,0	317,0	223,0	136,0	1,222
Quadraqua L	300,0	1828	300	224	44,30	3,50	822,0	656,0	497,0	348,0	211,0	1,240

Grație prestațiilor ridicate ale corpurilor încălzitoare Irsap Quadraqua, se consideră ideale pentru proiectarea la joasă temperatură un Δt la 30°C

Pentru $\Delta t \neq$ de 60°C utilizați formula: $Q=Q_n (\Delta t / 60)^n$

Standard equipment

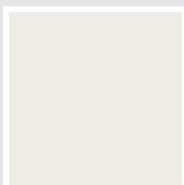
- robinet tur-retur satinat unghi reversibil dotată cu racorduri cupru (\varnothing 12, 14 mm) multistrat (14 grosime 2 și 16 grosime 2)
- kit elemente de acoperire a țevilor (pentru țevi cu grosimea de până la 16 mm)
- sistem de fixare pe perete
- aerisitor

Packing

Atenția pe care Irsap o rezervă fiecărui calorifer se manifestă și în grija pentru ambalaj. Fiecare produs este protejat de un material antișoc care previne zgârieturile și deteriorările accidentale pe parcursul transportului sau a manipulării pe șantier. Toate ambalajele trebuie colectate și reciclate conform legislației în vigoare.

Colori e finisaje

CLASSIC



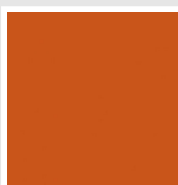
Bianco Edelweiss
Cod. 34



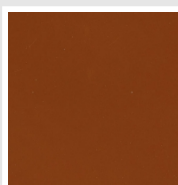
Beige Cream
Cod. 26



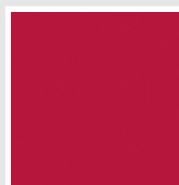
Giallo Melone - RAL
1028
Cod. E7



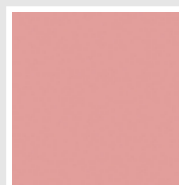
Arancio - RAL 2004
Cod. 17



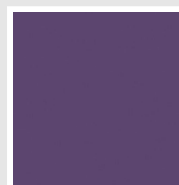
Marrone Ruggine -
RAL 8004
Cod. E1



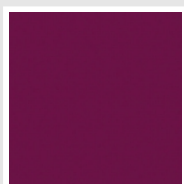
Rosso Fragola - RAL
3018
Cod. Y3



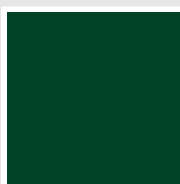
Rosa - RAL 3015
Cod. R2



Lilla Bluastro - RAL
4005
Cod. R3



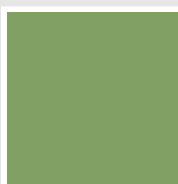
Porpora Traffico -
RAL 4006
Cod. R6



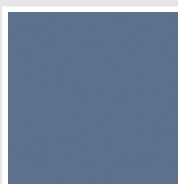
Verde Bosco - RAL
6005
Cod. 19



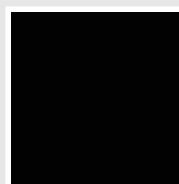
Verde Erba - RAL
6018
Cod. N3



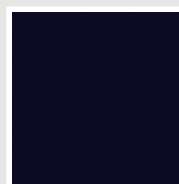
Verde Salvia - RAL
6021
Cod. E6



Blu Pastello - RAL
5024
Cod. G7

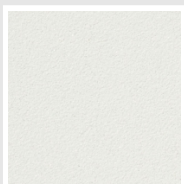


Nero - RAL 9005
Cod. 10

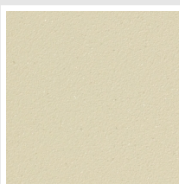


Deep Blue
Cod. 2F

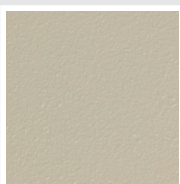
SPECIAL



Bianco Perla
Cod. 16



Quartz 1
Cod. 1C



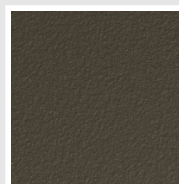
Sablé
Cod. Y4



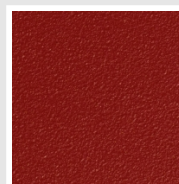
Quartz 2
Cod. 2C



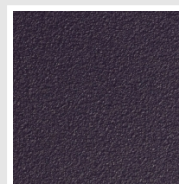
Sunstone
Cod. 2D



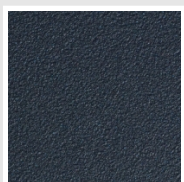
Bruno Tabacco
Cod. 1B



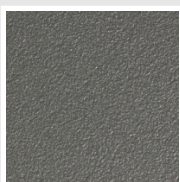
Flame Red
Cod. 7D



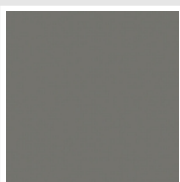
Purple Blue
Cod. 1D



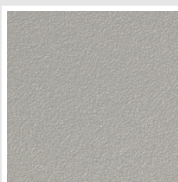
Azurite 3
Cod. 6C



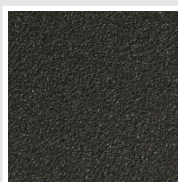
Grigio Medio
Cod. 4D



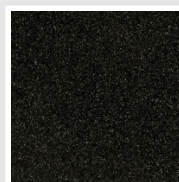
Grigio Titanio
Metallizzato - RAL
9023
Cod. L3



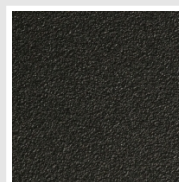
Grigio Perla
Cod. L6



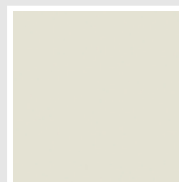
Nero Grafite
Cod. 18



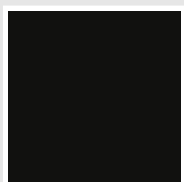
Grigio Quarzo
Cod. 31



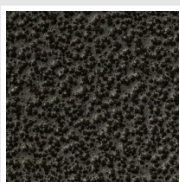
Nero Satinato
Cod. 30



Bianco Opaco
Cod. J8



Nero Opaco
Cod. K1



Grigio Martellato
Cod. 32



Rame Martellato
Cod. J4

The Colors used in this folder are not considered binding. The different technological painting processes and the materials used for the realization can not have a perfect color match with the delivered product. Irsap company reserves the right to introduce at any time

whatever modifications necessary to the improvement of the product.